
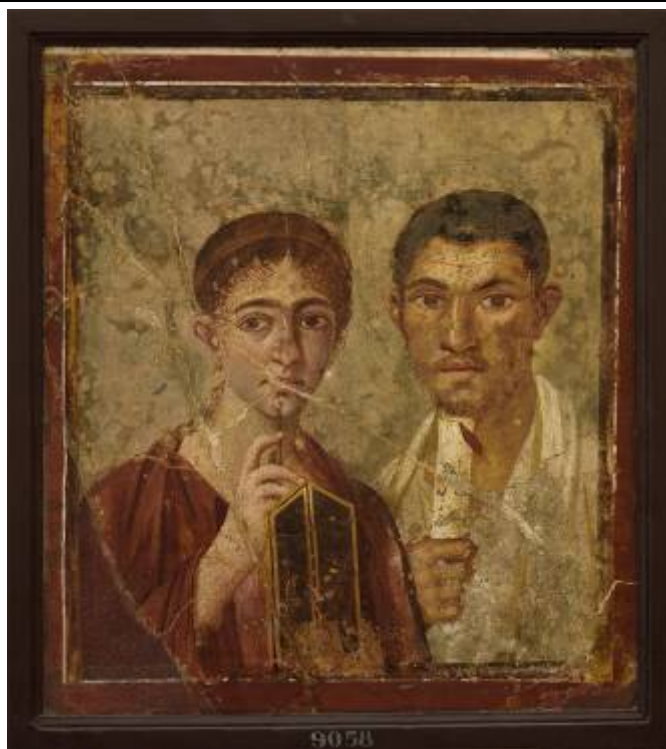


**Задание 1**

А	Б
 A marble relief sculpture depicting two figures, likely a man and a woman, standing side-by-side. The man on the left is dressed in a draped garment, and the woman on the right is also in a draped garment. Between them is a rectangular panel with several lines of ancient Greek or Latin inscriptions. The background is a dark red color.	 A terracotta sculpture of two figures, possibly a man and a woman, standing side-by-side. The figure on the right has a long, braided beard and is wearing a striped garment. The figure on the left is wearing a plain garment. The sculpture is made of a reddish-brown material and has a weathered appearance.

**В**



**Г**



## Задание 2







**Задание 3**

А



Б



#### Задание 4

#### Примеры убранства древних помпейских домов









**Помпейская столовая в Зимнем дворце,  
архитектор А.Брюллов, 1836-1839 гг**



**Помпейский зал Мариинского дворца в Санкт-Петербурге,  
архитектор А.Штакеншнейдер, 1839-1844 гг.**



**Помпейский коридор в Юсуповском дворце,  
архитектор Б. Симон, 1840-ые годы,**



**Вестибюль Помпейского дома в Москве, С.Бархин, 2004-2005**

